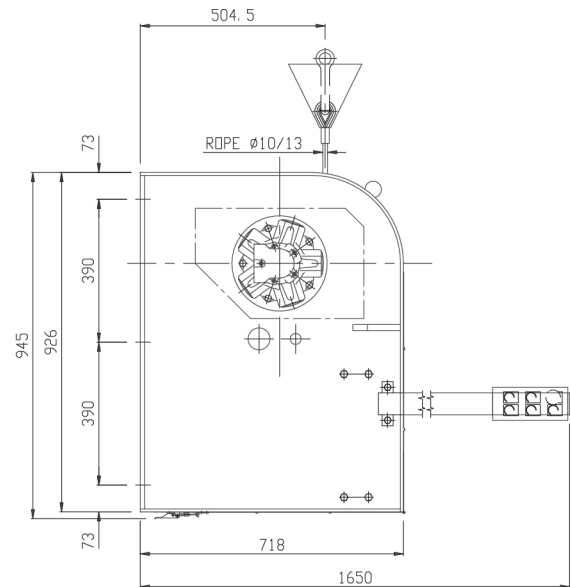
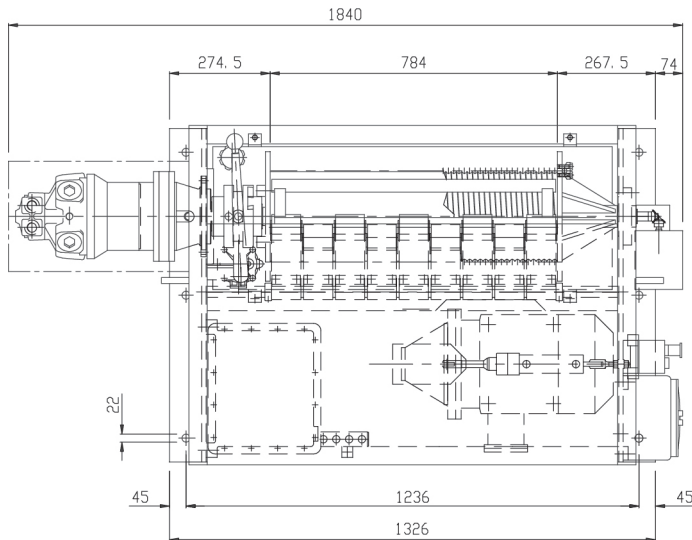


WINCHES FOR SPECIAL APPLICATIONS



CHARACTERISTICS

The winch is located inside shelter, near the back side along a lateral wall.

In the back side of the shelter, on the floor, it is foreseen a device for the guide and return of the cable towing the aircraft (return pulley).

Traction pull will be continuous and regular (without jerking) until the aircraft reaches its final position.

The configuration of the winch is resistant to aircraft fuel and to hot temperatures (It withstands high temperatures that can reach 175 °C for short periods).

It is also able to resist to the exhaust gases of the aircraft engines.

TECHNICAL DATA

Direct pull	2000 kg (towing)
Resistance to a pull of 3000 Kg max (shooting stall)	
Unwinding speed	not controlled automatically (paying out), handmade with drum in idle position
Sheltering slow speed	from 0 to 4 m/min (slow hauling speed) automatically controlled
Cable winding speed	40 m/min idle and without automatic control
Sheltering fast speed	from 0 to 15 m/min (fast hauling speed) automatically controlled. Electrical power: 220/380 Volts – 50 Hz
Electrical power	220/380 Volts – 50 Hz

SPECIAL EQUIPMENT

